

JOE 2025 Information Packet for Fluviarchy Tour

Day: Saturday	Start Time: 8:30 am	End Time: 3:00 pm
Co-Leader:	Co-Leader:	Limit: 15 people
Transportation: Van or Personal Car	Driver:	Bus Captain: N/A
Fees: \$18 Transportation Fee	Travel Distance: Total 34.5 miles	Travel Time: Total 56 min /in five parts

Fluviarchy Tour

Milford offers a unique experience for nature lovers and outdoor enthusiasts. It is situated atop an escarpment with breathtaking views of the Delaware River. This remarkable location features a distinctive element known as a "fluviarchy," a spectacular network of waterfalls fed by streams cascading down a 100-foot (30 m) elevation. These stunning falls enhanced the area's natural beauty and played a vital role in Milford's economy during the nineteenth century by providing waterpower for local mills. Discover Milford, where nature meets history, and the community thrives!

George W. Childs Park

First up on our adventure is George W. Childs Park Trail! This scenic trek follows the enchanting Dingmans Creek through a lush ravine with breathtaking waterfalls and historic structures. Our short hike passes three stunning waterfalls: the 30-foot Deer Leap Falls, the 56-foot Fulmer Falls, and the unique three-tiered Factory Falls at 18 feet, all within a shady ravine. Experience nature on our 1.4-mile trail with a minimal elevation gain of 180 feet. Whether you prefer strolls on smooth paths, boardwalks, or exploring gravel trails, there is something for everyone. Discover remnants of an old woolen mill from 1823 to 1832, offering a fascinating glimpse into the area's history. This site is named after George W. Childs, a philanthropist whose widow deeded the land to Pennsylvania in 1912. Immerse yourself in nature and history at this stunning park!

Dingmans Falls and Silverthread Falls

Next, we will explore two stunning waterfalls accessible to everyone via a short boardwalk trail through a hemlock ravine filled with rhododendrons. As you trek, you will marvel at Silverthread Falls, an 80-foot cascade so perfect that you might believe it is artificial; it is all Mother Nature's handiwork. Then there's Dingmans Falls, the second-highest waterfall in Pennsylvania, standing at 130 feet. In August, the rhododendron thickets along the trail are in full bloom. This 0.4-mile trail features smooth boardwalk paths. If you want to squeeze in a workout, climb the steps to the top of Dingmans Falls; the view of the roaring waters makes it worth breaking a sweat!

Lower Hornbecks Creek Trail

The Hornbecks Creek Trail, also known as Indian Ladders, is a hidden gem in the Delaware Water Gap National Recreation Area. This trail follows an old roadbed alongside Hornbecks Creek, leading to a charming waterfall framed by symmetrical cliffs and a round plunge pool. As you hike, enjoy the picturesque flow of the creek, which is always nearby. The trail offers a gradual ascent and is primarily

JOE 2025 Information Packet for Fluviarchy Tour

easy, with short, steep hills. It starts flat and remains close to the creek, featuring a wide, smooth path free of rocks and roots. You will cross several footbridges as the trail meanders.

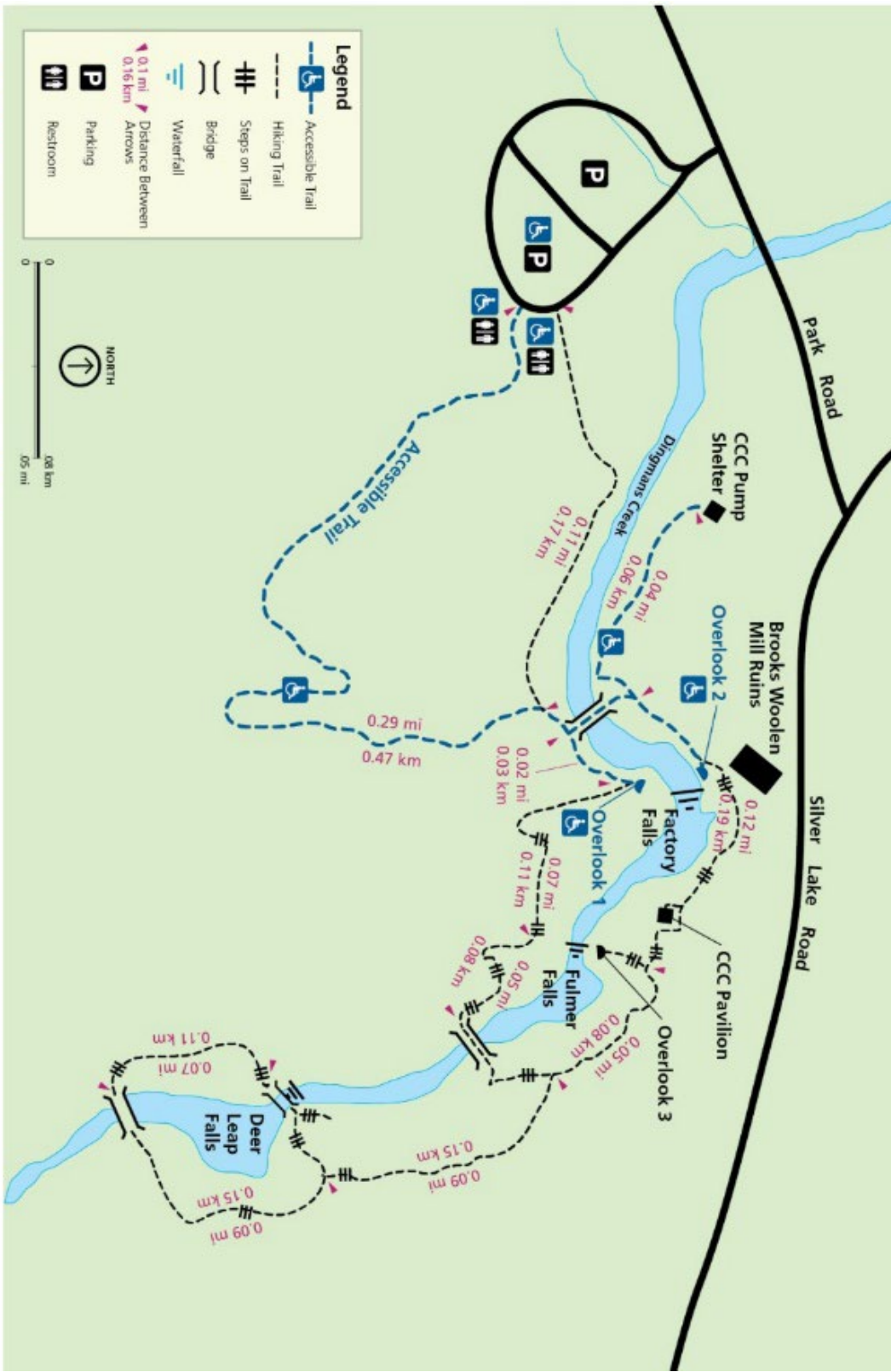
- Bring a hat, food, water, a hiking stick, sturdy shoes, and water shoes for wading.
- Cost: \$18 Transportation Fee (bring cash with you for ice cream)
- Time: 8:30 am ~ 3:00 pm
- Limit: 15 People
- Vehicle: Passenger Van or Personal Cars (TBD)
- Total travel time: 56 min / 34.5 miles broken up into five parts.
- Click [HERE](#) for more details.

Logistics:

- Pack Lunch during breakfast.
- 8:30- Depart from camp.
- 8:30 – 8:50: Travel from Camp to George W. Childs Park
- 8:50 – 9:00: Gear Check and Hike Prep
- 9:00 – 10:15: Explore George W. Childs Park
- 10:15 – 10:30 Travel from George W. Childs Park to Digman’s Ferry Visitors Center
- 10:30 – 12:00 Explore Digman’s Falls Trail and Lunch
- 12:00 – 12:15 Travel from Digman’s Falls Trail to Hornbecks Creek Trail to Lower Indian Ladder Falls
- 12:15 – 1:45 Explore Hornbecks Creek Trail to Lower Indian Ladder Falls
- 1:45 – 2:10: Travel from Hornbecks Creek Trail to Downtown Milford and Dairy Bar
- 2:10 – 2:50: Ice Cream
- 2:50 – 3:00 Travel from Milford back to camp.
- It is an option to explore Milford if the group all agree, but please be back at camp by 4:30

George W. Childs Park

George W. Childs Park features three waterfalls about 1.4 miles of walking trails.



Allow one hour to tour the park.

George W. Childs Park Trail

The first waterfall is about a third of a mile down on a wide, handicapped-accessible trail. This waterfall is known as Factory Falls because it is located next to a 19th-century woolen mill. The stone foundations of this mill remain, adding a lovely touch of history to this beautiful hike.

A short distance after Factory Falls, you will find Fulmer Falls, which do not require directions. Fulmer Falls is listed at 56 feet tall and is the largest of the Childs Park waterfalls. This waterfall is unique because the creek descends into a semi-circular basin of rock before continuing downstream.

Continuing downstream, the last waterfall at Childs Park is Deer Leap Falls. I assume the name comes from the narrow gorge at the top of the waterfall, which appears as if a deer could leap across. Today, a bridge spans the top of this waterfall, providing a scenic view and an opportunity to look down from above. A bridge is also just downstream of the falls, marking the park's official bottom of the loop.

Parking: [N41° 14.227' W74° 55.151'](#)

Restrooms: Composting toilet in the parking lot.

Hike Directions: There is only one unmarked trail. From the parking lot, the accessible trail leads to a bridge, where it branches off into a loop.

Links of interest:

[NJHiking](#) / [AllTrails](#) / [Wikipedia](#)

[Reopening of the park in 2024](#)

[Picture of George W. Childs Park](#)

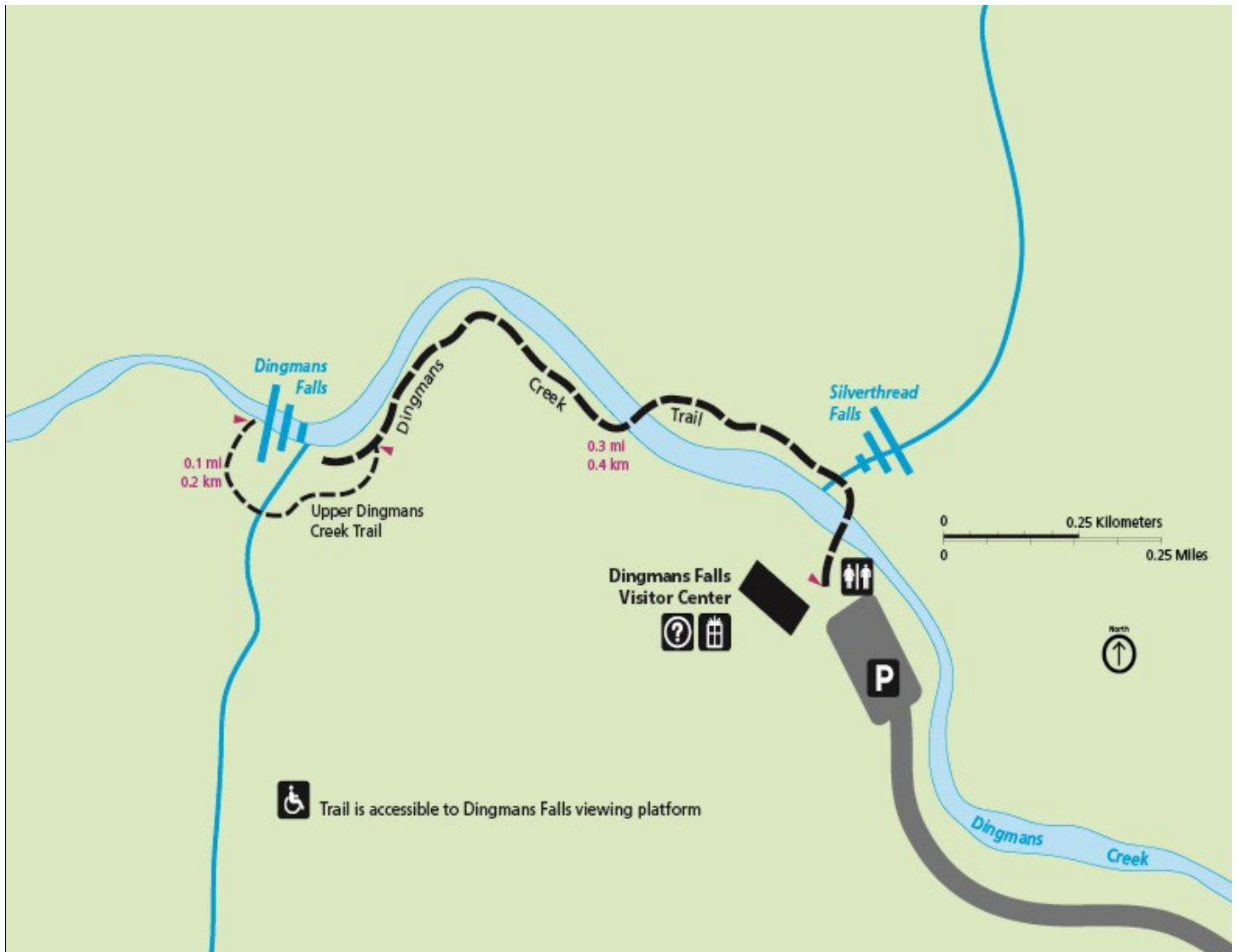
Vendor:

National Park Service: 570-426-2451

Delaware Water Gap National Recreation Area - 1978 River Rd, Bushkill, PA 18324 / (570) 426-2452

For park alerts: <http://www.nps.gov/dewa/index.htm>

Dingmans Creek Trail



The Dingmans Creek Trail is accessible and popular within the Delaware Water Gap National Recreation Area.

Basic Details

Trail Length: 0.4 miles, one-way

Difficulty: Easy. The first 0.3 miles are stroller and wheelchair accessible, while the last 0.1 mile consists mostly of stairs and is regarded as moderately difficult.

Elevation Change: The first 0.3 miles have a fifty-five-foot elevation change, and the last 0.1 mile features a 107-foot elevation change.

Trailhead Location: The trailhead is next to the restrooms in the Visitor Center parking lot at the end of Dingmans Falls Road.

Restrooms: Accessible restrooms are located at the trailhead.

Important location notes and restrictions:

- Aside from trained service dogs, pets are prohibited at this location. Visit the website for more information about Service Animals in National Parks.
- Bus and RV parking is prohibited in the Dingmans Falls Visitor Center lot on weekends and federal holidays.
- The following areas are off-limits for swimming or wading: Dingmans Creek, from one hundred feet upstream of the top of Dingmans Falls to the end of the Dingmans Falls Visitor Center Parking Lot, including the pool at the base of Silverthread Falls.
- Picnicking is prohibited on the Dingmans Creek Trail or observation platforms.
- The road to Dingmans Falls is closed to vehicle traffic during winter months but is open to pedestrians. Check our Current Conditions page for more information.
- Please stay on marked trails.
- Fishing is not allowed in Dingmans Creek from one hundred feet upstream of the top observation platform to the roadside end of the parking lot.
- Silver Thread Falls along the Dingmans Falls Trail is closed to all climbing, rappelling, diving, or jumping, including ice climbing, for resource protection.

Links of interest for Digman's Falls: [TripAdvisor](#) / [NJHiking](#) / [AllTrails](#)

JOE 2025 Information Packet for Fluviarchy Tour

Hike Description: This hike starts at the main parking lot for Dingmans Falls, located at the end of Dingmans Falls Road. It follows the main trail from the parking lot into a mountain valley filled with rhododendrons. The trail first crosses Dingmans Creek, following a scenic footbridge that offers views of the creek's banks, which are lush with old rhododendrons.

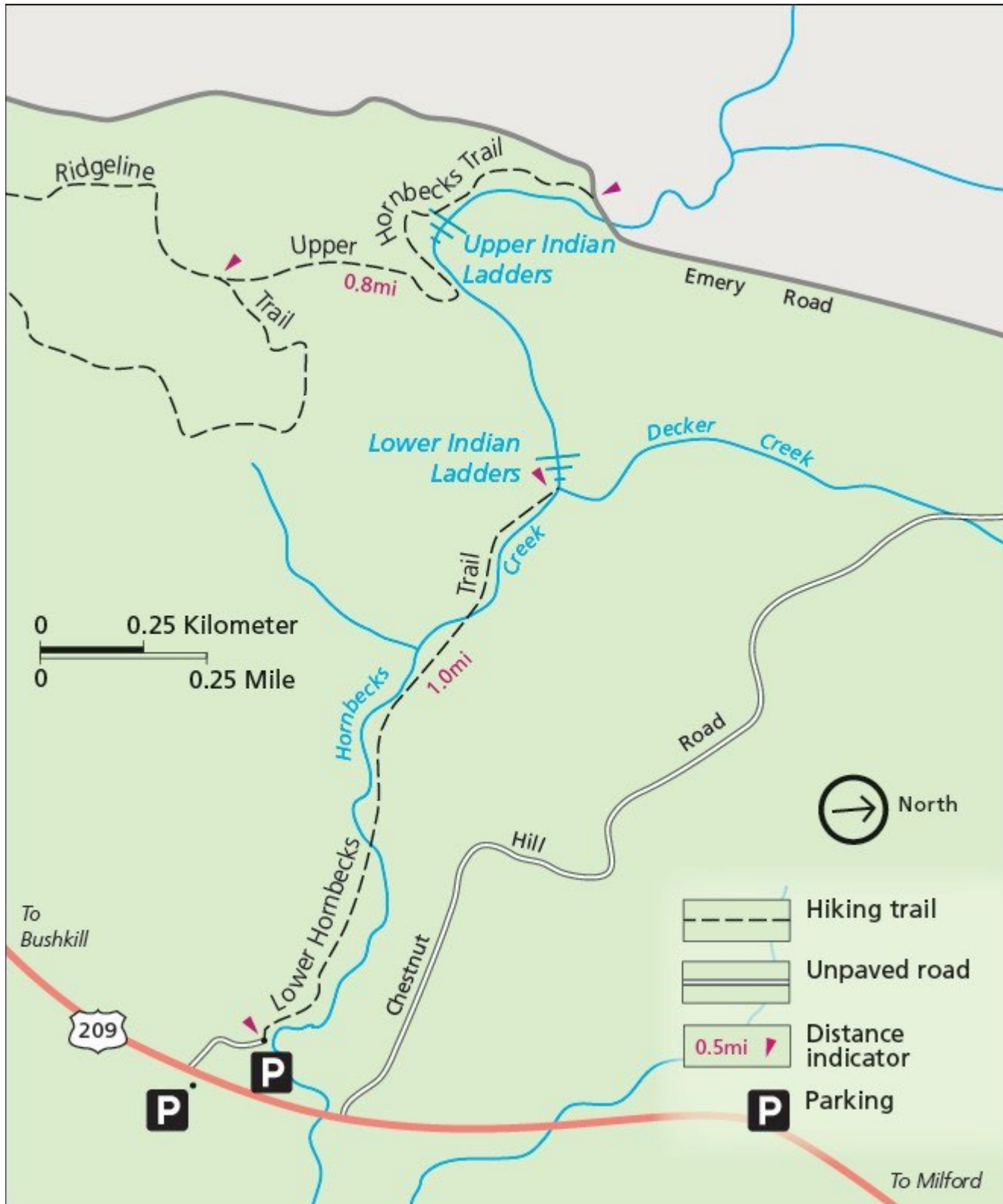
Shortly into the hike, around mile 0.06 (just a few hundred feet in), hikers will encounter the two-tiered 80-foot-tall waterfall known as Silverthread Falls. A keen-eyed hiker might notice the flat-cut rock lining the waterfall's gorge—these square-cut stones are not natural, indicating that the gorge's bedrock was once carved out for mining purposes. Despite the blend of natural and man-made rock formations, Silverthread Falls stands out as one of the most picturesque waterfalls in the Delaware Water Gap.

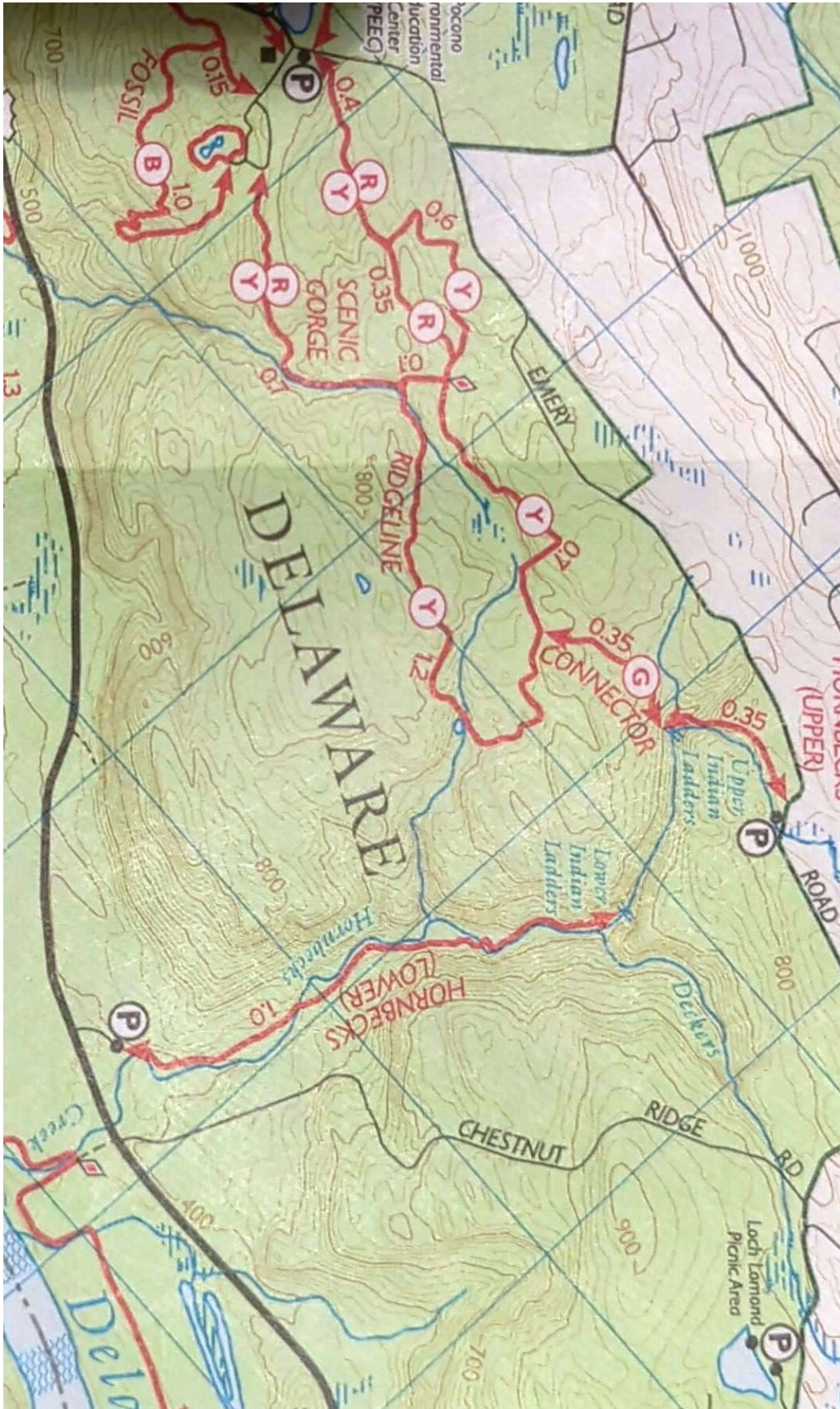
After exploring Silverthread Falls, hikers will follow the Dingmans Creek Trail boardwalk as it winds through a forest filled with ferns and moss. On the way to Dingmans Falls, the trail will cross Dingmans Creek again, providing hikers with another scenic view. The trail will then curve around a bend, marked by a sign that reads "Dingmans Falls."

At mile 0.37, hikers will reach the end of the universal access path, where a breathtaking view of the 130-foot-tall Dingmans Falls awaits. Just next to Dingmans Falls, another waterfall cascades into Dingmans Creek, enhancing the stunning scenery. Dingmans Falls descends over several layers of bedrock to reach the creek, cascading down 130 feet.

After visiting Dingmans Falls, hikers can ascend the nearby staircase to view the top of the falls; however, the most impressive view is from its base. If you decide to hike out after visiting Dingmans Falls, you will complete this easy hike at about 0.8 miles.

Lower Hornbecks Creek Trail





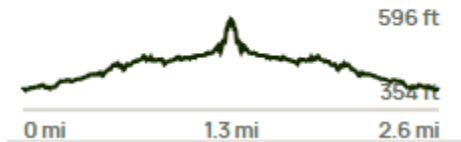
Lower Hornbecks Creek Trail

Difficulty: Easy

Trailhead Location: [directions to Lower Hornbecks Creek trailhead](#); mile marker 10.4 on US 209 (just south of Chestnut Hill Road); short gravel drive to the trailhead

Restrictions: Swimming and wading are prohibited within 50 feet upstream of waterfalls and at the waterfalls themselves.

Gain: 193.57 ft | **Loss:** 193.57 ft

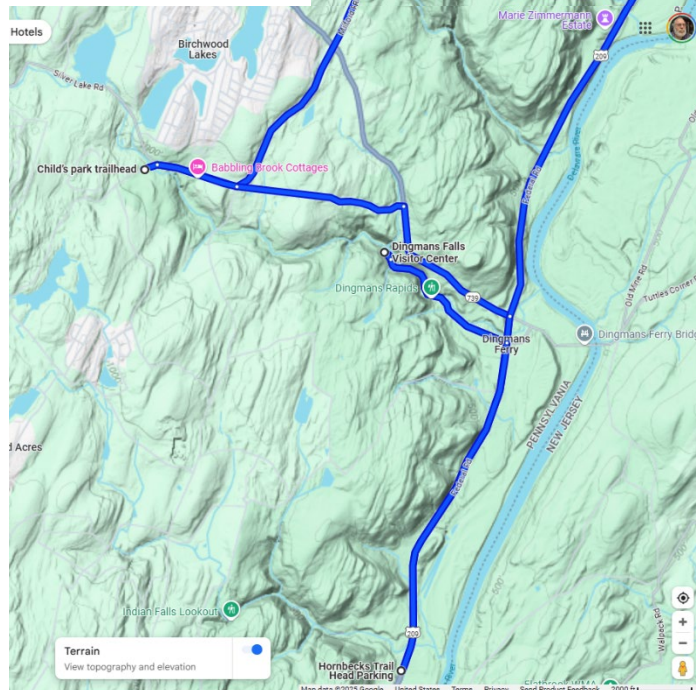
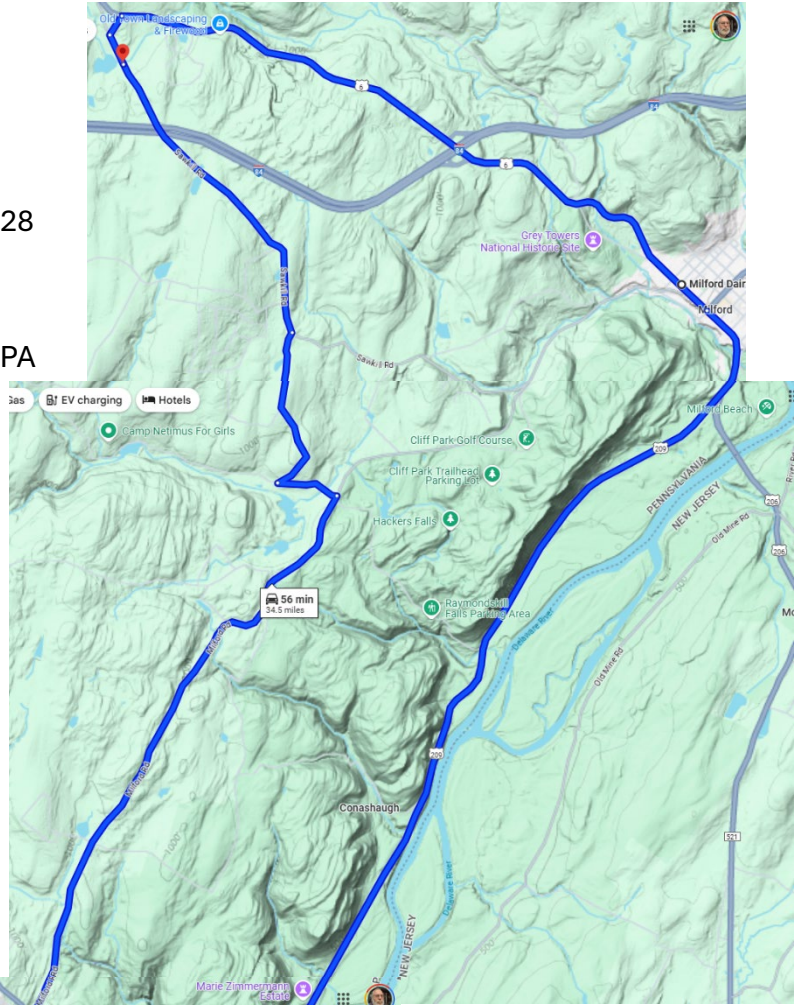


- Length 2.6mi round trip
- Elevation gain 193ft.
- Estimated time: 1.5 Hours (with staying taking a break at the falls)
- Trail Type: Out & back
- The Lower Hornbecks Creek Trail dead-ends at the base of Lower Indian Ladders Falls (GPS coordinates 41.19480, -74.90259).
- Links of interest: [AllTrails](#) / [National Parks Planer](#) / [PA Bucket List](#) / [TripAdvisor](#)
- YouTube: [Nature of Pennsylvania in 360° VR](#) / [The Wandering Woodsman](#) / [Trekking PA and Beyond](#)
- Paper Map: *New 2021* [Delaware Water Gap & Kittatinny Trails Map](#)
- Digital Avanza App [Delaware Water Gap & Kittatinny \(Combined Map\): 2021: Trail Conference](#)



Locations and Map

1. Camp Nah-Jee-Wah
 - a. 570 Sawkill Rd, Milford, PA 18337
2. George W. Childs Park
 - a. 102 Park Rd, Dingmans Ferry, PA 18328
3. Dingmans Falls Visitor Ctr
 - a. Dingmans Falls Visitor Center, 224 Dingmans Falls Rd, Dingmans Ferry, PA 18328
4. Hornbecks Trail Head Parking
 - a. US-209 (Federal Rd), Dingmans Ferry, PA 18328
 - b. 41.18711, -74.88541
 - c. 41°11'13.6"N 74°53'07.5"W
5. Milford Dairy Bar
 - a. 307 W Harford St, Milford, PA 18337
6. Camp Nah-Jee-Wah
 - a. 570 Sawkill Rd, Milford, PA 18337



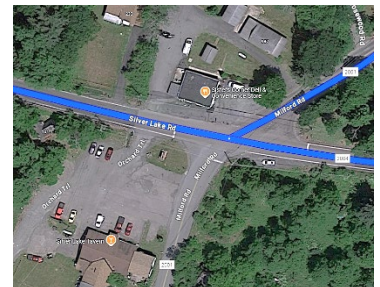
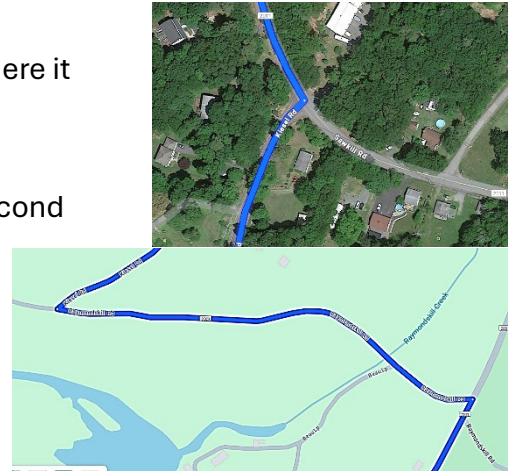
Driving Directions: In five parts

Total Driving for full tour: 56 min (34.5 miles)

Part I:

Start: Camp Nah-Jee-Wah - 570 Sawkill Rd, Milford, PA 18337

- ↪ Turn right out of the driveway of the camp, heading southeast on Sawkill Rd toward Nah-Jee-Wah Rd
 - Go 2.3 mi.
- ↪ Turn right onto Kiesel Rd. Follow it until you reach the end, where it intersects with Raymondskill Road.
 - Go 1.3 mi.
- ↶ Turn left onto Raymondskill Rd. Continue straight until the second right onto Rt. 2001. Raymondskill Road veers to the right and then takes a quick left. Avoid this route, as it will take you down a steep, winding, narrow road with little chance to turn around.
 - Go 0.4 mi.
- ↪ Turn right onto County Rd 2001.
 - Go 5.6 mi.
 - One mile before the park entrance, you will come to the light for Rt 739 (Digman's Turnpike). There is a Citgo and other stores on the corner.
 - At the corner of County Rd 2001 and Silver Lake Rd, there will be Sisters Corner Deli and Convenience Store on the right and Siler Lake Tavern on the far-left corner.
- ↪ Turn right onto Silver Lake Rd
 - Go 0.6 mi.
- ↶ Turn left onto Childs Park Rd/Park Rd/T344
 - Continue to follow Park Rd/T344
 - Go 0.1 mi.
- ↶ Turn left 46 ft into Park Entrance



END: George W. Childs Park, 102 Park Rd, Dingmans Ferry, PA 18328 (41.237794, -74.919937)

First leg 17 min (10.4 mi)

Part II:

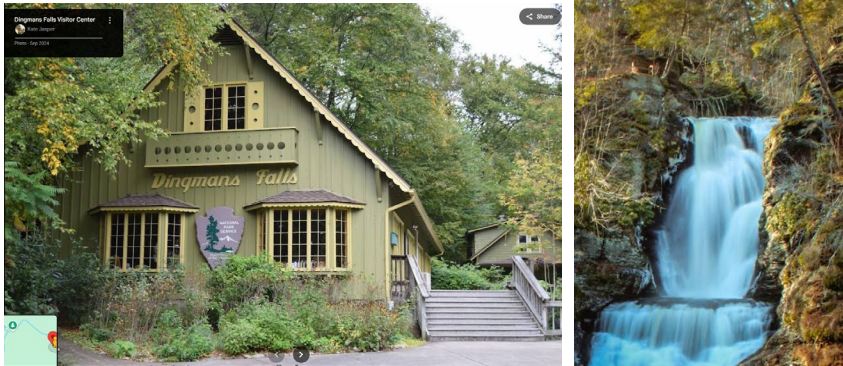
Start: George W. Childs Park - 102 Park Rd, Dingmans Ferry, PA 18328

- Turn right out of the park's driveway and head back the way you come to Park Rd/T344.
 - Go 0.1 mi.
- Turn right onto Silver Lake Rd
 - Go 1.8 mi downhill to the end of the road at a stop sign.
- Turn right onto PA-739 S (Digmans Turnpike)
 - Go 1.2 mi to the first road/light at US-209. You will cross Delaware into New Jersey if you go too far.
 - You are now in the valley.
- Turn right onto US-209 S
 - Go 0.2 mi to the first intersection.
- Turn right onto Dingmans Falls Rd towards Digman's Fall Visitor Center
 - Drive 1.2 miles to the end of the road, where it turns into a parking lot for the visitors' center. Park and enjoy.



END: Dingmans Falls Visitor Center, 224 Dingmans Falls Rd, Dingmans Ferry, PA 18328

9 min (4.5 mi)



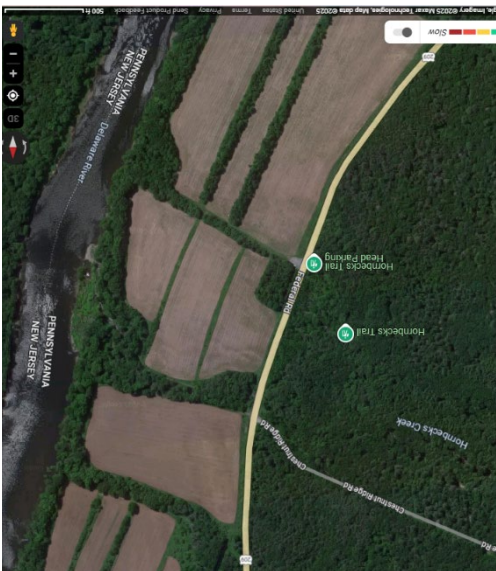
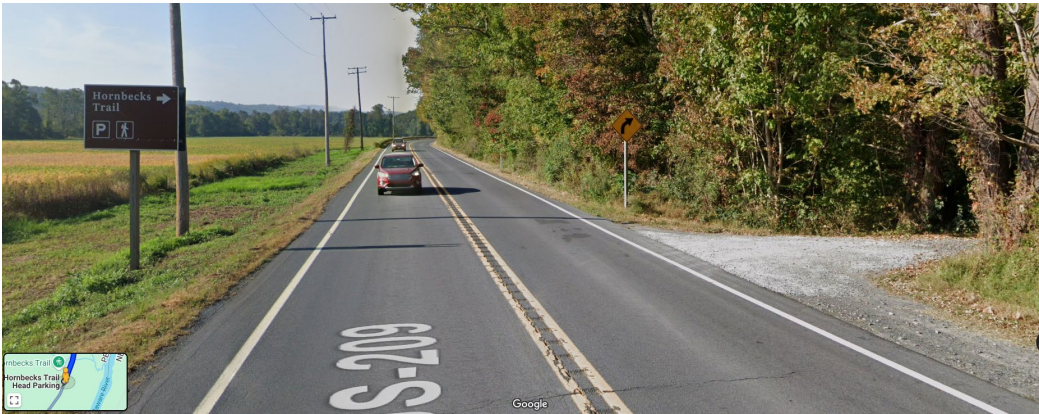
Part III

Start: Dingmans Falls Visitor Center, 224 Dingmans Falls Rd, Dingmans Ferry, PA 18328

- ↪ Head south out of the parking lot toward Dingmans Falls Rd
 - 1.1 mi to US-209
- ↪ Turn right onto US-209 S
 - Go 2.5 mi past Digman’s Campground
 - Watch for a sign marked “Hornbecks Trail” on the left for a driveway on the right.
- ↪ Turn right into Hornbecks Trail Head Parking (mile marker 10.4)

END: Hornbecks Trail Head Parking, Federal Rd, Dingmans Ferry, PA 18328 (41.18711, -74.88541)

Leg III: 7 min (3.6 mi)



South

North

Small parking lot



JOE 2025 Information Packet for Fluviarchy Tour

Part IV:

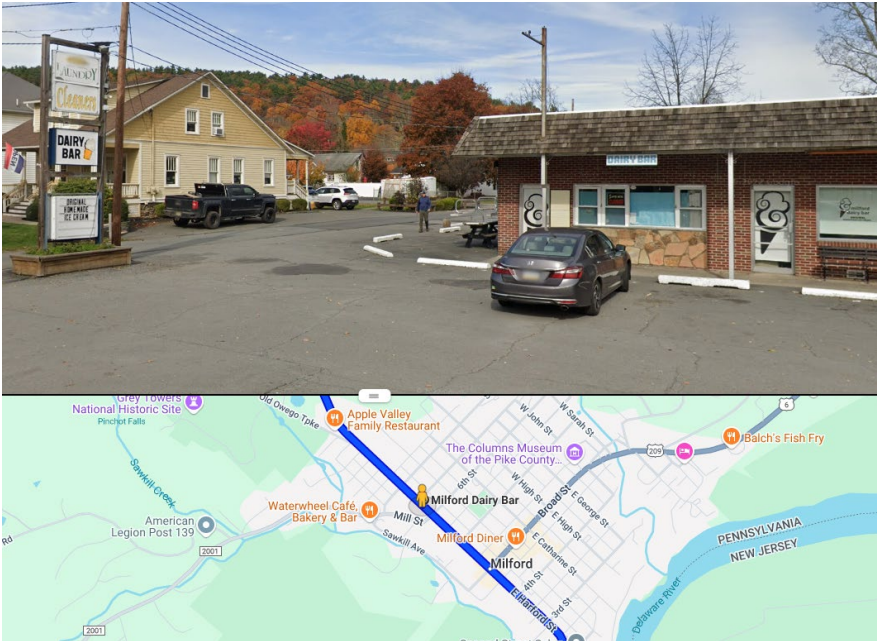
Start: Hornbecks Trail Head Parking, US-209 (Federal Rd), Dingmans Ferry, PA 18328

- Turn Left out parking lot back the way you came to head north on US-209 N toward Chestnut Ridge Rd
 - Go 10.8 mi.
 - BE MINDFUL OF THE 45 MPH SPEED LIMIT
 - You will eventually come to the town of Milford. Continue straight through the one light in town.
 - Dairy Bar will be on your right halfway through town.

END: Milford Dairy Bar, 307 W Harford St, Milford, PA 18337

[Facebook](#)

LEG IV:17 min (11.1 mi)



Part V:

Start: Milford Dairy Bar, 307 W Harford St, Milford, PA 18337

- Continue northwest on US-6 W/W Harford St toward Currant Alley to head out of the other end of town.
 - Go 4.6 mi.
- You will be heading out of town. Then, cross over I-84 and Eureka Stone Quarry. Bridge Street is one mile after the Quarry.
- ↶ Turn left onto Bridge Rd
 - Go 0.2 mi.



- ↶ Turn left onto Sawkill Rd
 - Go 0.2 mi to the gate for camp.



- ↷ Destination will be on the right.

END: Camp Nah-Jee-Wah, 570 Sawkill Rd, Milford, PA 18337

LEG V: 7 min (5.0 mi)

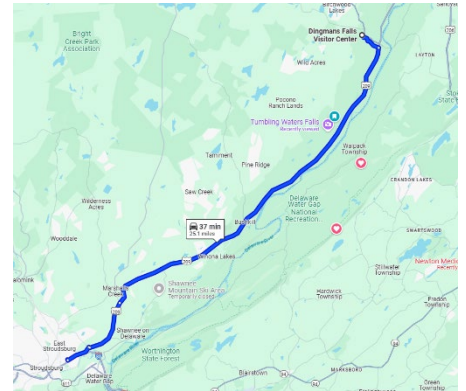
JOE 2025 Information Packet for Fluviarchy Tour

Nearest Hospital: **Lehigh Valley Hospital – Pocono**

206 E Brown St, East Stroudsburg, PA 18301

<https://www.lvhn.org/locations/lehigh-valley-hospital-pocono-mattioli-emergency-center>

[\(570\) 421-4000](tel:(570)421-4000) / [Get Directions](#)

A detailed navigation map showing the route from the Dingmans Falls Visitor Center to 206 E Brown St, East Stroudsburg, PA 18301. The map includes a sidebar with navigation instructions, a search bar, and various map controls. The route is highlighted in blue, and the destination is marked with a red pin. The map also shows local landmarks such as the East Stroudsburg University of Pennsylvania and the Lehigh Valley Hospital - Pocono.

from Dingmans Falls Visitr Ctr, Dingmans Falls Vi...
to 206 E Brown St, East Stroudsburg, PA 18301

37 min (25.1 miles)
via US-209 S
This route starts on Dingmans Falls Rd, which is closed now

Dingmans Falls Visitr Ctr
Dingmans Falls Visitor Center, 224 Dingmans Falls Rd, Dingmans Ferry, PA 18328

- ↑ Head south toward Dingmans Falls Rd
▲ May be closed at certain times or days
335 ft
- ↑ Continue onto Dingmans Falls Rd
▲ May be closed at certain times or days
1.1 mi
- ↪ Turn right onto US-209 S
📍 Pass by Taco Bell (on the left in 17.1 mi)
19.6 mi
- ↪ At the traffic circle, take the 2nd exit onto US-209
3.0 mi
- ↪ Turn right onto PA-447 N
282 ft
- ↩ Turn left onto E Brown St
1.3 mi
- ↪ Turn right
📍 Destination will be on the left
246 ft

206 E Brown St
East Stroudsburg, PA 18301

Search along the route
Gas EV charging Hotels

Lehigh Valley Hospital - Pocono
East Stroudsburg University of Pennsylvania
Koehler Fieldhouse
Spring Village AT
Pocono - Personal Care...
Quality Inn East Stroudsburg - Poconos
Prospect Cemetery
University Ridge Apartments
Fine and Performing Arts Center

Live traffic - Fast Slow
Terrain
View topography and elevation

Map data ©2025 Google United States Terms Privacy Send Product Feedback 500 ft